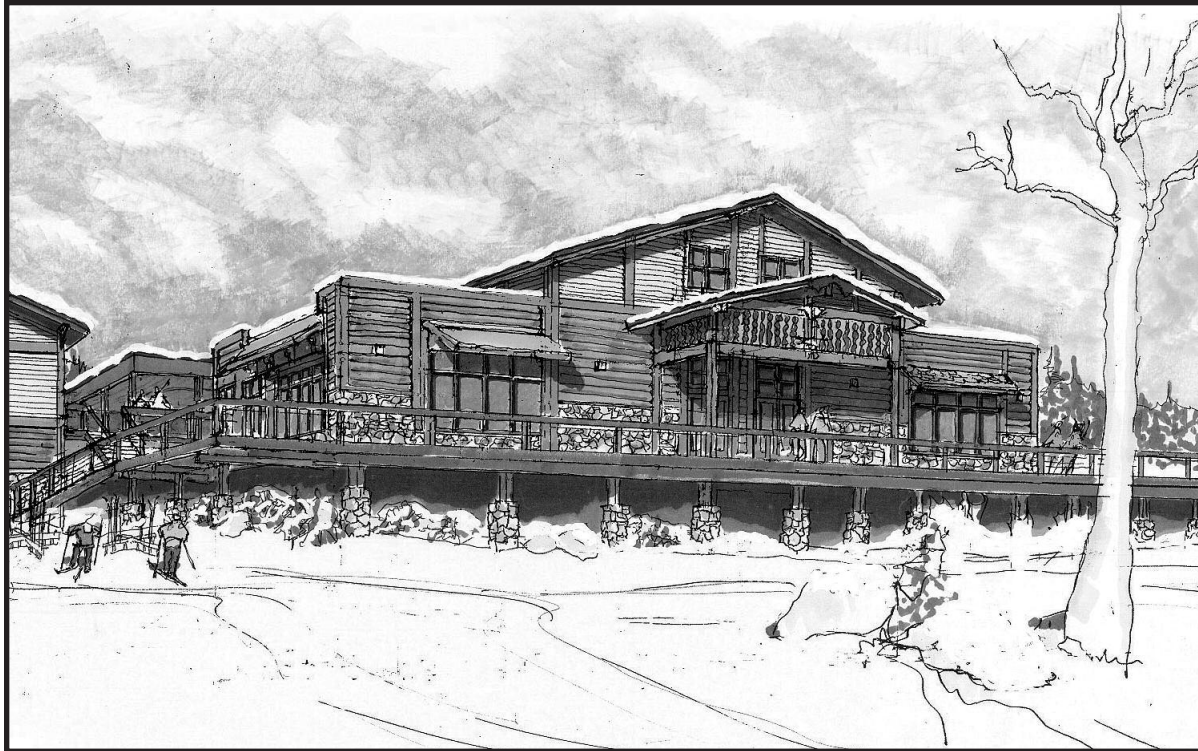


Happy
Holidays

The Fishwrapper



MOOSE MOUNTAIN CHALET

Enhancements at Lutsen Mountains Ski Area A Renaissance of Epic Proportion - and Artful Dimension

A true classic retains its original luster — and continues to inspire a sense of awe. That is the driving desire and the heart of the Lutsen Mountains experience. Over the past decade, they focused on developing their natural advantage. Capitalizing on vast terrain and vertical by adding dozens of off-piste tree-skiing glades and three new chairlifts, they have created a ski complex beyond the wildest dreams of any other Midwest ski area.

Today, Lutsen Mountains is in the midst of the next chapter as they shift their focus toward enhancing the comforts of the experience. Look what's NEW since last winter:

- Complete remodeling of the Gondola Base Chalet including rest rooms with slate and tile decor, new locker rooms, upscale furnishing in the café and a cozy new third-floor fireplace lounge
- New lodge with a massive sundeck on Moose Mountain's summit more than triples the chalet space on the mountain (opens December 2005)

Plans are moving forward for a new ski school facility, learners area, and magic carpet lift. And that's just the beginning. Over the next few years, they will be adding an ice skating pavilion, high-speed lifts and a new Moose Mountain base area. Stay tuned!



EXPANDED ICE RINK

The new Bluefin Bay Ice Rink, located across from the Superior Waters Wellness Center / Tofte Room and beside the tennis court is complete and more than FOUR TIMES the size of our past rinks. It is pictured above.

As in years past, we will continue outdoor movie nights on the rink complete with hot chocolate and goodies. When we are not showing movies, the rink is lighted at night. So, on your winter visit, remember to bring your skates so you can enjoy this great new facility. AND, if you forget your skates, no problem, we have lots of them available, complimentary to Guests, at the Guest Services Center. So, come join us for a fun-filled and romantic experience.

Great Winter Specials

WARM UP TO WINTER

Stay three days and get one day FREE.
Available in December
EXCEPT Holiday Periods.

JANUARY 3 for 2 SPECIAL

Stay three days and receive one day FREE.
Available January 2 - 31, 2006
EXCEPT Holiday Periods.

Purchase a 2 day lift ticket and get a third day FREE at www.lutsen.com.

4 for 3 Special over MLK Weekend

FEBRUARY 4 for 3 SPECIAL
Stay four days and get one day FREE.
Available all of February, 2006

FAMILY SKI WEEKS SPECIAL

Purchase a 4+ day adult ticket Sunday - Thursday, at regular rates, and get a 4+ day Child's ticket FREE. Stay at Bluefin Bay for 4+ days Sunday - Thursday and for each paid adult, one child stays free and eats free (from our kids menu).

MARCH WEEKENDS

AT SUNDAY - THURSDAY RATES

Stay 3 or more days and receive all at Sunday - Thursday rates.
Available March 12 - 31, 2006.

KIDS RENT FREE

With online purchase of Child Lift Ticket.
Valid throughout entire 2005 - 2006 season.

"It is neither wealth nor splendor, but tranquility and occupation, which gives happiness."

-- Thomas Jefferson

Bluefin Bay
1-800-Bluefin



GIFT CARDS

Give the gift of Bluefin Bay this Holiday Season, or at any time of the year, with a Bluefin Gift Card. Whether it is a loved one, friend, relative boss or employee, Bluefin Gift Cards are the perfect gift and available in any denomination by calling 1-800-BLUEFIN. Let us know where to send them and we will take care of the rest. **WAITED UNTIL THE LAST MINUTE?** No problem, we can ship via overnight delivery at your direction and at cost.

Calendar of Events

DECEMBER 2005

GALES OF DECEMBER SPECIAL

- 1 Winter Activities Start at Bluefin Bay
- 8-11 & 15-18 The Lion, The Witch and The Wardrobe (Grand Marais Playhouse)
- 21 Winter Solstice Celebration (North House Folk School)
- 22 Last day of Autumn Quiet Time at Bluefin
- 25 Christmas Day
- 26 Boxing Day (Canada)
- 31 New Year's Eve

JANUARY 2006

JANUARY 3 for 2 SPECIAL

- 1 New Year's Day
- 5-7 Sno Ball Festival (Lutsen Mts)
- 16 Martin Luther King Jr. Day
- 29 John Beargrease Sled Dog Marathon begins

FEBRUARY 2006

FEBRUARY 4 for 3 SPECIAL

- 2 Ground Hog Day
- 10-12 Family Olympic Festival (Lutsen Mts)
- 14 Valentine's Day - Happy Birthday Dennis
- 20 President's Day

MARCH 2006

MARCH WEEKENDS at MIDWEEK RATES

- 17 St. Patrick's Day
- 20 Spring Equinox
- 26 Spring Fever Special and Spring Quiet Time start at Bluefin Bay.

APRIL 2006

SPRING FEVER SPECIAL

- 1 April Fool's Day
- 1 Spring Carnival (Lutsen Mts)
- 6, 1981 Bluefin Vision Began
- 16 Mt Melt Down at Lutsen Mts - Free Skiing
- 16 Easter

MAY 2006

SPRING FEVER SPECIAL

- 5&6 Food & Wine Lover's Weekend at Bluefin Bay
- 14 Mother's Day
- 14 Senior's Weeks start at Bluefin Bay
- 29 Memorial Day

SUPERIOR WATERS WELLNESS CENTER

The all new Superior Waters Wellness Center and Spa is now open at Bluefin Bay. Located in the Recreation Center, at the center of Bluefin Bay. Superior Waters has become so popular among our Guests that we urge you to make an appointment before you arrive. To do so, just call 1-800-BLUEFIN and the Guest Services staff will set you up for any of the wonderful and relaxing therapies including:

Heated Stone Massage Therapy, Deep Tissue Massage Therapy, Swedish or Esalen Massage, Prenatal Massage Therapy, Couples Massage, Skin Restorative Seaweed Pack, Partial Body Therapies, Myofascial and Neuromuscular Therapy and more..

Whether you come to Superior Waters for an hour or for the whole day, our staff is ready to make your stay a memorable experience in this warm and tranquil world designed to let the rest of the world just fall away.

Winter Activities

Once again Bluefin is proud to announce our Guest Services for the winter. Activities provide varied and unique opportunities for all ages. Some of the activities that will be offered are:

- Crafts & Indoor Games
- Guided Snowshoe Tours
- Guided XC Ski Tours
- XC Ski Waxing Lessons
- Pizza Feed & Movie Night
- Campfire, S'mores, Hot Drinks, and Ice Skating
- Therapeutic Massage
- Daily Shuttle Bus Rides to Lutsen & XC-Ski Trailheads

Please call 800-BLUEFIN for more details or visit www.bluefinbay.com.



CHEF PAUL HINDERLEY and BLUEFIN STAFF

F.Y.I.

SCREEN SAVER

Thanks to Darren Peck, In-House Technical Wizard and Guest Service Manager, you can now download a Screen Saver consisting of the 2006 Bluefin Calendar photos. Just go to www.bluefinbay.com. Currently the Screen Saver is PC compatible.

X-C SKIING

The best trails of the North Shore Cross Country Ski Trail System are located right in Tofte. They are accessible across Highway 61 and at the many trailheads to which you can drive or take our Complimentary Shuttle Bus. Be sure to try out the Sugar Bush Loops which have been fully graded and brushed out by the Sugarbush Trail Association and Bluefin Bay Staff. These trails were featured in the Winter issue of Minnesota Trails Magazine in an article entitled "Wintering on the North Coast". For a romantic experience try one of our guided moonlight tours. Whether you like to skate ski, or diagonal on some of 250 km of groomed and tracked trails - or maybe bushwack through nearly unlimited forests - there is terrain for every level and interest of x-c skiing close by to Bluefin Bay. You can bring your own equipment or use some of ours, Complimentary to Bluefin Guests and available at the Guest Services Center.

CONTEST

Attention Photographers - The 2006 Calendar is complete and the 12th Annual Calendar Contest is underway for the 2007 Calendar. We need your help! If you have quality, color photographs in HORIZONTAL format of the North Shore and/or Bluefin Bay, you could win one of 12 prizes including the Grand Prize of \$1000 in Bluefin lodging and dining (some restrictions apply) if your photo is chosen for use in the Calendar.

In order to enter the contest, just send your photo entries to our Twin Cities Office:

Bluefin Bay Photo Contest
2325 Wayzata Blvd., Suite 130
Minneapolis, MN 55405

See the back of any Bluefin Calendar for details or go to www.bluefinbay.com. DEADLINE is May 1, 2006.

JASON DAVIS "ON THE ROAD"

As of this writing, we are told that the "On the Road" Show featuring Bluefin Bay will air on KSTP sometime in February. For more details when we have them, just send your email address to darren@bluefinbay.com and we will notify you as soon as we know.

RITA'S HOLIDAY RECIPE - Lingonberry Streusel Bars

Ingredients

- Crumb Mixture
- 2 cups all-purpose flour
- 1 cup sugar
- 3/4 cup chopped pecans
- 1 cup softened butter
- 1 egg

Filling

- 10 oz lingonberry preserves
- Preheat oven to 350. Spray a 9x9 baking pan or line with parchment. Mix all ingredients for

FOOD & WINE LOVERS

A great time was had by all Guests who attended the November Food & Wine Lovers Weekend at Bluefin Bay. The next event is May 5 & 6, 2006. Our Guest Chef will be Kirk Bratrud, founder of Bayport's American Cookery and partner and executive chef of the Boathouse Restaurant on Barker's Island, Wisconsin. Kirk began his career 20 years ago at his family's inn, Mrs. B's Historic Lanesboro Inn. He founded the Cookery in 1991 and received Zagat Survey's second highest overall score in the Mpls/St. Paul Guide. The Cookery has been included in Gourmet Magazine's "America's Top Tables and Bon Appetite's "Best Restaurants" as well as receiving the Minneapolis Star Tribune's "Most Memorable Meal of the Year" Award. So make your reservations TODAY by phoning 1-800-BLUEFIN and savor the great food of Guest Chef Kirk Bratrud along with Chef Barret Stavseth and Sous Chef Ed Douglass of The Bluefin Grille.



RITA WEHSELER

Dog Musher & Baker

Born in Greenwood, Minnesota, Rita started mushing dogs 12 years ago. Her interest in mushing brought her to Tofte to live in 1998 and she has worked at Bluefin Bay ever since. Rita began working first at the Coho Café, however, many of you may remember her at the Front Desk at Bluefin where she took a sabbatical from baking before returning to the Coho as Chief Baker in 2004. She is currently has 40 dogs and is training them in two teams - one for Racing and one for Touring. This winter, she plans to participate in 5 races including the Beargrease in which she has placed third. Rita has the distinction of being the first woman ever to cross the finish line at the CanAm Crown 250 Sled Dog Race in Maine. She loves the companionship of her dogs and the freedom of the sled as she flies down the trail. How does she keep track of 40 dogs and their lineage? She names each litter in themes. Right now she is on National Parks, characters of Lord of the Rings, Towns in Alaska and Tour de France Winners. A world traveler, Rita has lived in Alaska and served on Missions in Tanzania, Guatemala and Nicaragua. This winter she will be using her Touring Team to give dog sled rides to Guests. She starts the rides at the Club House of the Superior National Golf Course. In order to book a ride, call 1-888-616-6784.

crumb mixture together on low speed until mixture becomes crumbly. Set aside one cup of crumb mixture; press remaining crumb mixture onto bottom of prepared pan. Spread the preserves evenly & crumble remaining crumb mixture over the preserves. Bake approximately 45 minutes or until lightly browned. Cool & cut into desired servings. Great to take along to those holiday parties or box them up for a gift exchange.

Happy Holidays!